

## AVAILABLE PARTNERS ON THIS CALL

**BELGIUM**

- BCCM - MUCIL: Agro-food and Environmental Fungal Collection
- BCCM - IHEM: Fungi Collection: Human and Animal Health
- BCCM - ULC: Cyanobacteria Collection

**PORTUGAL**

Micoteca da Universidade do Minho

**SPAIN**

CECT Spanish Type Culture Collection

**NETHERLANDS**

Westerdijk Fungal Biodiversity Institute

**LATVIA**

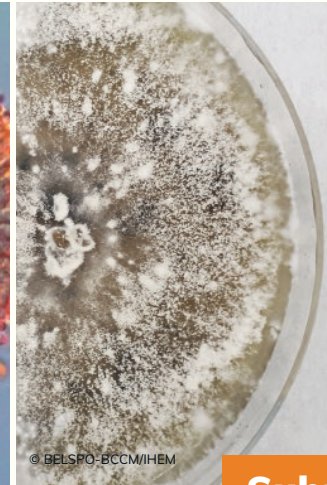
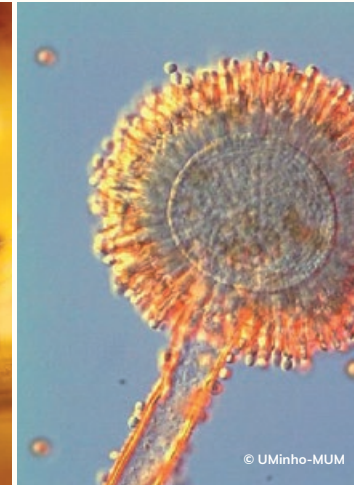
LATVIJAS UNIVERSITATE Microbial Strain Collection of Latvia

**RUSSIA**

All-Russian Collection of Microorganisms

**ITALY**

UNIVERSITÀ DEGLI STUDI DI TORINO Mycotheca Universitatis Taurinensis



**Submit your proposal**

## 2<sup>nd</sup> Transnational Access Call is now open!

February 1<sup>st</sup> to May 15<sup>th</sup>, 2022

Are you interested in top-class microbiology facilities?

For more information about our partners, please visit the website: [ismirri21.mirri.org/project-partners](https://ismirri21.mirri.org/project-partners)

### For more information

Our website

[www.mirri.org](http://www.mirri.org)

Contact us through

[access@mirri.org](mailto:access@mirri.org)

Our social media

[@MIRRI\\_live](#)

[@mirri.esfri](#)

[MIRRI/IS\\_MIRRI21](#)



This project has received funding from the European Union's Horizon 2020 Research and Innovation programme, under the Grant Agreement n° 871129. This document reflects only the author's view and the Commission is not responsible for any use that may be made of the information it contains.



### Physical access

Hands-on access of the user to the Access Provider's facility



### Remote access

Non-physical access of the user to the Access Provider's facility



### Virtual access

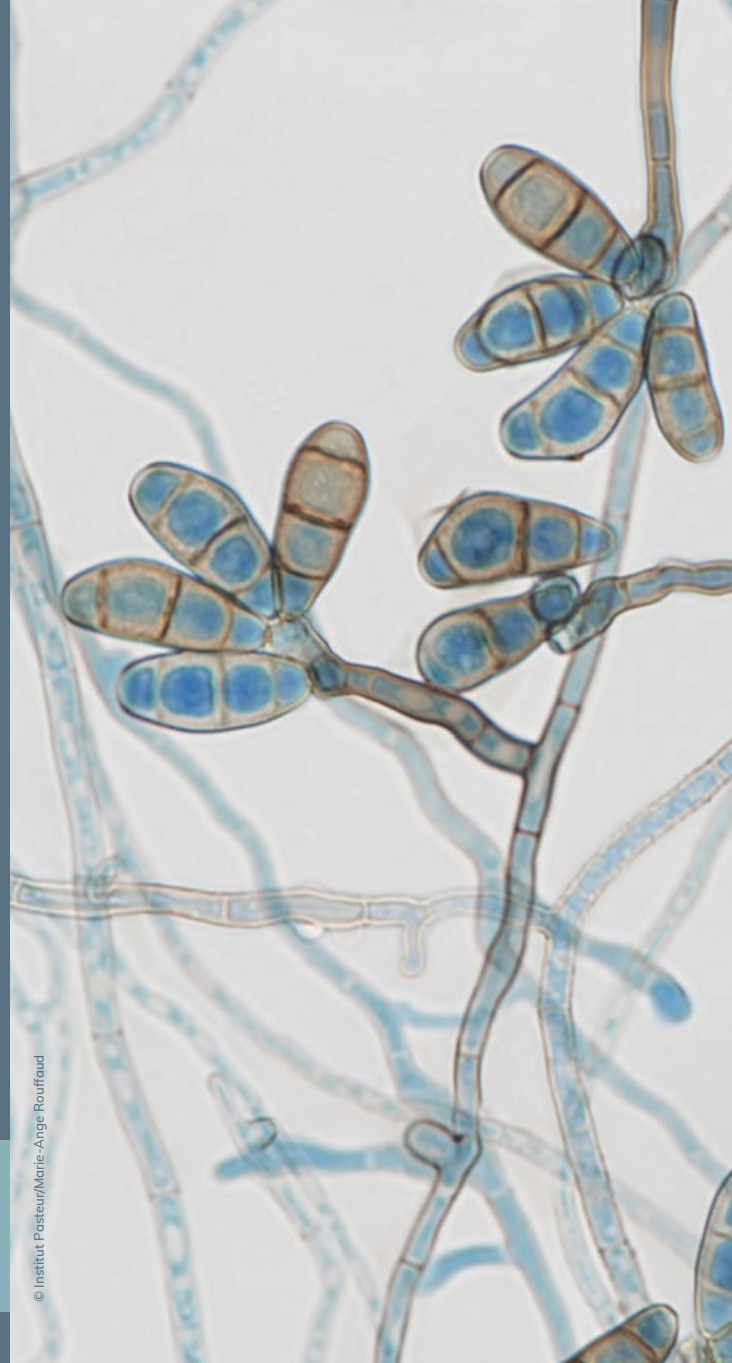
User access via communication networks, i.e, data are available simultaneously for multiple users

Scientists from research organisations and companies (in the fields of biotechnology, agro-food, pharmaceuticals, environment, etc.) can apply for funded access to the 9 IS\_MIRRI21 available partner's facilities to carry out their research projects.

Applicants must submit a research proposal, which will be assessed by a panel of experts in microbiology based on scientific merit.

Applicants must contact the Access Officer at [access@mirri.org](mailto:access@mirri.org) to assess the feasibility of the project prior to the submission of the proposal

© Institut Pasteur/Marie-Ange Rouffaud



## Successful applicants will obtain free-of-charge access to:



### Microbial resources

Bacteria and archaea from yeasts, filamentous fungi, etc.



### Expertise

Phylogenomics, study and cultivation of microorganisms from diverse environments, human and animal pathogens, agroindustrial microorganisms, etc.



### Experimental facilities

Growth rooms, bioreactors, microscopy facilities, freeze dryers, ultra cryo-freezers, etc.



### Technology platforms

Chromatography, flow cytometry, molecular biology, natural products analysis, mass spectrometry, whole genome sequencing, data analysis, etc.

## The TNA programme also sponsors:



**Travelling**  
(one round trip per person)



**Subsistence**  
(meals and accommodation for up to 30 days)



**Shipping of project materials**  
(from the IS\_MIRRI21 facility to the home institution)

For more information about our TNA offer, please check our TNA catalogue available on: [www.mirri.org](http://www.mirri.org)