



D8.2

Report of CC's current status and presence of National Nodes in European countries



The project "Implementation & Sustainability of Microbial Resource Research Infrastructure for 21st Century" (IS_MIRRI21) has received funding from the European Union's Horizon 2020 research and innovation programme under grant agreement n° 871129. This document reflects only the author's view and the European Commission is not responsible for any use that may be made of the information it contains.

Project number:	871129
Project acronym:	IS_MIRRI21
Project title:	Implementation & Sustainability of Microbial Resource Research Infrastructure for XXI Century
Start date of the project:	1 st February 2020
Duration:	36 Months
Programme:	H2020/Research and Innovation Actions: INFRADEV-03-2019

Deliverable type:	Report
Deliverable reference number:	D8.2
Work package:	WP8
Due date:	31 January 2021 – M12
Actual submission date:	09 April 2021

Responsible organisation:	IBPRS			
Editor:	Joanna Bucka-Kolendo			
Version:	Revised by:	Date:	Notes:	
v1.0	Joanna Bucka-Kolendo	25.01.2021	1 st Draft	
v1.1	Nelson Lima	09.02.2021	Editing revision	
v1.2	Gerard Verkley	11.02.2021	Internal reviewer	
v1.3	Antera Martel	11.02.2021	Internal reviewer	
V2.0	Joanna Bucka-Kolendo	15.02.2021	Editing revision	

Abstract:	This is the report on the results of a survey conducted on CC's about the current status and presence of National Nodes in European countries (identification of geographical gaps) and if MIRRI is included in the national ESFRI roadmap. This will allow us to scope the progression towards the MIRRI RI enlargement.
Keywords:	Culture Collection, CC's, partnership, National Node, NN

Dissemination level:	Public	X
	Confidential (for the Consortium and EU Commission Services only)	

Executive Summary

This is the report on the results of a survey conducted on CC's about the current status and presence of National Nodes in European countries (identification of geographical gaps) and if MIRRI is included in the National Research Infrastructure Roadmap(s). This will allow us to scope the progression towards the MIRRI RI enlargement.

Contents

1. Introduction	5
1.1. Methodology	5
2. CC's: current status	8
2.1. The National Nodes	10
2.2. Risk and mitigation and Key Performance Indicators in the WP8 deliverables	14

Content of Tables and Figures

Figure 1 The scheme of the identification of geographical gaps of National Nodes in European countries.	11
Table 1– Currently contacted CC's	8
Table 2– List of the countries and their CC's that were contacted.	9
Table 3– List of the potential countries that can join MIRRI and the national delegates.	12
Table 4– Critical risks for implementation in WP8.	14
Table 5– Key Performance Indicators.....	14



1. Introduction

1. Introduction

The WP8 is about the Consolidation & Enlargement of Membership and Partnership of MIRRI, which is crucial for MIRRI's sustainability. For this reason, WP8 will develop and implement a detailed approach to increase the number of countries engaged in the RI with a financial contribution and to enlarge the mBRCs and CCs partner base. With respect to enlarging the membership of MIRRI, WP8 aims to consolidate the Members that have already signed the MoU, to strengthen, support, and consolidate existing Partners' collections, and to stimulate new engagements at all levels (members, partners, and other stakeholders). For this, the task proposed in the frame of this WP will promote the expansion of the membership by communicating the advantages to stakeholders, organizing activities to integrate local/national collections and industrial engagement, and rising decision-makers awareness to ensure a successful implementation of the enlargement and consolidation plan, as the main goal of the WP8.

The underlying reasons for countries not willing to join MIRRI will be investigated and evaluated. This will allow the team to understand and analyse such motives and share experiences from the already engaged countries to better explain the advantages of becoming a MIRRI Member in order to attract them. A tailored plan on the ways to adapt MIRRI's offer accommodating specific country requirements (e.g. adaptation of services among others) could also be considered. This will help to bring on board the initially not committed countries in the long-term.

This deliverable reports the CC's current status and presence of National Nodes in European countries

1.1. Methodology

1.1.1. Inventory of CCs in the current MoU signatory countries

A list of CCs from MoU signatory countries was prepared to retrieve information about the status of the National Node in their countries.

1.1.2. Search for potential new members approached through several strategies:

1.1.2.1. A dedicated Workshop addressed to European CC's organized on 23 October 2020 from Warsaw Poland via an online connection. After the Workshop "Implementation and Sustainability of Microbial Resource Research Infrastructure for the 21st Century", we received feedback from different CC's with an interest in the MIRRI.

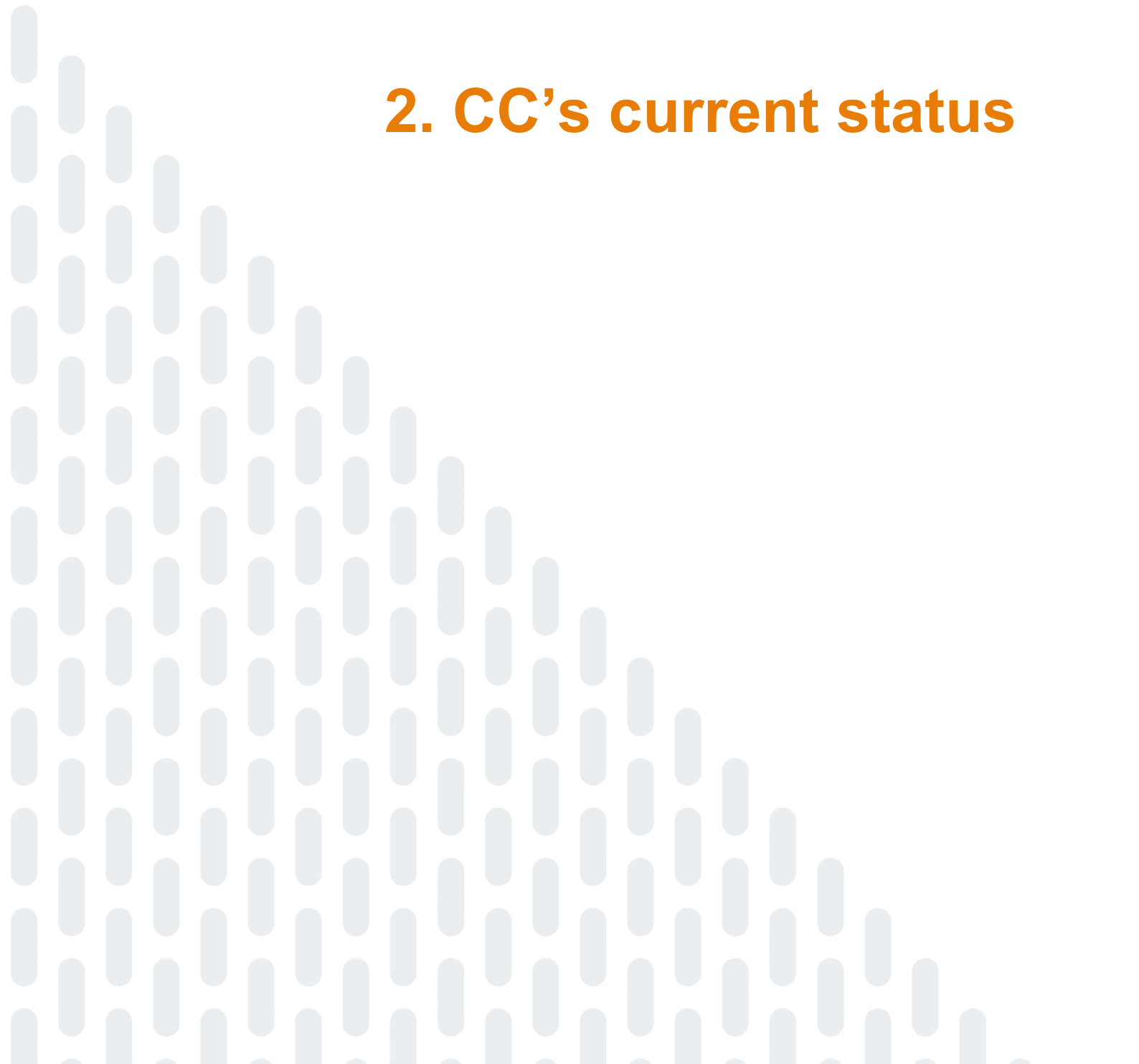
We had 90 registered participants from Poland (29 from 17 institutions), Portugal (18 from 8 institutions), Italy (12 from 5 institutions), Colombia (6 from 4 institutions), Spain (5 from 2 institutions), Greece (3 from 1 institution), Brazil (3 from 3 institutions), Romania (1), Ecuador (1),

Chile (1), Pakistan (1), Chile (1), Argentina (1), Russia (1), Switzerland (1), UK (1), Czech Rep. (1), Turkey (1).

1.1.2.2. **IS_MIRRI21** partners participation in the Cooperation Workshop on FOOD SECURITY hosted by the EU-Latin America and the Caribbean Working Group on Research Infrastructures.

1.1.2.3. At the same time, together with INRAE representatives, a partner in the **IS_MIRRI21** project, and with Coordinator Nelson Lima, we agreed to prepare a list of industries that might have collections of their own and can be interested in the RI MIRRI. Potential partners like industry representatives are a vital group that includes the organizations which may develop more interest in MIRRI's activities. The partnership of the industrial/stakeholders can be beneficial for both sides. The industry representatives will achieve access to the knowledge, services, and resources, where at the same time **IS_MIRRI21** will increase and develop the research infrastructure.

2. CC's current status



2. CC's: current status

Based on the feedback from the Workshops, we made contact with the Culture Collection of Switzerland (CCOS) with Dr Gottfried Dasen, and with Luxemburg Microbial Culture Collection (LuxMCC) with Dr Lucien Hoffman, as well as with the representatives of CCs located in Poland. The detailed information is gathered in Table 1.

Table 1– Currently contacted CC's.

Country	Collection	Contact Person
Luxemburg	Luxemburg Microbial Culture Collection (LuxMCC)	Dr. Lucien Hoffman
Switzerland	Culture Collection of Switzerland (CCOS)	Dr. Gottfried Dasen
Poland	Warsaw University of Technology, Faculty of Chemistry, Drug and Cosmetics Biotechnology, Laboratory of Microbiology and Bioengineering	Dr. Jolanta Mierzejewska
	Plant Protection Institute - National Research Institute, Department of Plant Diseases and the Bank of Pathogens	Dr. Sylwia Stępniewska-Jarosz
	Institute of Food Sciences, Department of Biotechnology and Food Microbiology	Dr. Marek Kieliszek

The purpose to gather Polish Collections is to establish a strong consortium that will finalize the formation of the National Node and will lead to the enhancement of cooperation, strengthening of the national partnership between collections, and improvement of quality management and control within the collections. The realization of this task will allow us to actively collaborate with national stakeholder communities, such as universities, industries, policymakers, and scientists.

Culture Collections from other European countries were contacted. An Invitation Letter with an introduction to MIRRI objectives, members, and current status as a RI was prepared and sent by the Chair of the MIRRI Interim National Coordinators Forum (INCF) encouraging them to contact us for more detailed information (Table 2).

In response to feedback received from interested collections, we will propose a meeting, or (in case of a larger number of CC's) we will organize a tailored workshop to exchange the information concerning MIRRI objectives and its current status to become an ERIC. We will also organize and start activities aiming to integrate local/national collections, thus effectively establishing a contact point for each country. Among the collections that we contacted, we received a positive reply from the Bulgarian ACUS Collection, Norway NORCCA Collection, and Estonian TFC Collection, with interest in collaboration to join MIRRI. Regarding this response, further action will be taken. We

also received feedback from the Hungarian NCAIM Collection, stating that they do not have the necessary support of their national policymakers, to be involved in MIRRI.

Table 2– List of the countries and their CC's that were contacted.

Country	Collection	Contact Person
Austria	ASIB- Culture Collection of Austria	Prof. Konrad Pagitz
Bulgaria	NBIMCC Bulgarian National Collection for Microorganisms and Cell Cultures	Prof. Snezhana Dimitrova
	AKUS Alga Collection of Sofia University	Prof. Blagoy Angelov Uzunov
Czech Republic	CCM Czech Collection of Microorganisms	Prof. Ivo Sedlacek
	CCF Culture Collection of Fungi	Dr. Alena Kubatova
	CAPM Collection of Animal Pathogenic Microorganisms	Dr. Marketa Reichelova
	CAUP Culture Collection of Algae	Prof. Pavel Skaloud
	CCALA Culture Collection of Autotrophic Organisms	Dr. Josef Juran
	CCBAS Culture Collection of Basidiomycetes	Dr. Ivana Eicherova
	CCC Culture Collection of Clavicipitales	Dr. Sylvie Pažoutová
	CCDM Culture Collection of Dairy Microorganisms	Ing. Vladmir Dráb
Denmark/Norway	SCCAP Scandinavian Culture Collection of Algae & Protozoa & NORCCA Norwegian Culture Collection of Algae	Vladyslava Hostyeva
Estonia	CELMS Collection of Environmental and Laboratory Microbial Strains	Signe Viggor
	CREP Collection of Reproductive Tract Microorganisms	M.Sc.Tiiu Roop
	BioCC-MC BioCC microbial collection	Liina Sadam
	HUMB Estonian Human Microbiota Biobank	Dr. Reet Mandar
	TFC Tartu Fungal Culture Collection	Dr. Kadri Poldmaa
Finland	VTTCC Culture Collection	Dr. Irina Tsitko
	MICCO & HAMBI Culture Collection	Dr. Pekka Oivanen
Hungary	HNCMB Hungarian National Collection of Medical Bacteria	Dr. Miklos Fuzi
	NCAIM- National Collection of Agricultural and Industrial Microorganisms	Dr. Gábor Péter
Slovakia	CCY Culture Collection of Yeasts	Dr. Renata Vadkertiova
	DGUB Department of Genetics, University of Bratislava	Prof. Viera Vlckova

After the brainstorm meeting with INRAE, concerning the industrial stakeholders, a short document has been created with the possible strategies to approach the industry sector. Although the initiative is not the aim of the WP8, we decide that collaboration and mutual exchange with the industry can be beneficial for both, MIRRI and industrial partners. The created document will be sent to the Advisory Board (AB), and it will be discussed with AB for further comments/ideas and actions.

2.1. The National Nodes

The long-term development of the enlargement will be supported in accordance with the priorities defined in this report. The strategy is composed of three complementary standards.

The National Node (NN) is an entity, either having a legal personality or being part of an institute having legal personality, designated by a Member, which coordinates the MIRRI activities of the Partners on the territory of the Member and links these activities with the pan-European activities of MIRRI. Each NN will have a coordinator who will be appointed by the competent authority of a Member and who will act as the operational liaison between MIRRI and the Partners that are located on the territory of the Member. First, it is important to establish a single contact point for the country and the evaluation of existing mBRCs in the countries, confirmed by the national delegates (Table 3). It is planned to reach the countries that are not yet involved in MIRRI actions, one of the ways is thru the delegates enlisted in the ESFRI National Roadmaps 2021 <https://www.esfri.eu/esfri-roadmap-2021>. If they are developed, identify the organizations that are responsible for decisions in the country and contact the country representatives, and the national representatives' mBRC. The establishment of national mBRCs can help identify and address existing gaps, depending on the presence or not of an mBRC in the country (besides smaller collections), there will be a different strategy for approaching the country (Figure 1). With the national single point identified, the CCs will be invited to participate in the international workshop. In case a country's single representative has not been chosen, a face to face meeting with at least two MIRRI members will be organized before the country can take part in national workshop activities. The CCs and representatives of the decision-makers from the government will be invited. After the positive feedback on the Invitation Letter, the document with the basic information for the country to become a MIRRI Member will send or a meeting/workshop to discuss the most important matters will be organized. These CC's and their country representatives will be the top priority for the engagement. At the moment, a list of representatives from MoU signatory countries has been prepared. They are also included in a mailing list (nrf@mirri.org) and it is being used for actions to progress in the MIRRI implementation.

Second, taking into account the strong cooperation with the European Culture Collections Organisation (ECCO, <http://www.eccosite.org>), the most active ECCO Corporate Members of different European countries that did not yet sign the MoU (Table 3) will be contacted. Face to face meetings are also foreseen to pursue a more individualized path adapted to the needs.

A third, horizontal priority, will be further improvement of MIRRI participation to pan-European RI and the overall contribution to the international community. Outside Europe, we have so far received a Letter of Interest from the Chilean Network of Microbial Culture Collections (RCCCM, acronym in Spanish), which currently comprises 9 CC covering the geographic territory, expressing the interest to become a partner of MIRRI. We have started to explore the possibility to have connections with Brazil, not directly with the Federal Government of Brazil, but with the State Governments, namely, with their funding agencies for research (Fundações de Amparo à Pesquisa - FAPs), since some of them have already expressed their interest to be connected with MIRRI activities. If, as in the case of Brazil, self-funding agencies or State Governments will show interest in a partnership, the Collaboration Agreement will be formed and sign.

Figure 1 The scheme of the identification of geographical gaps of National Nodes in European countries.

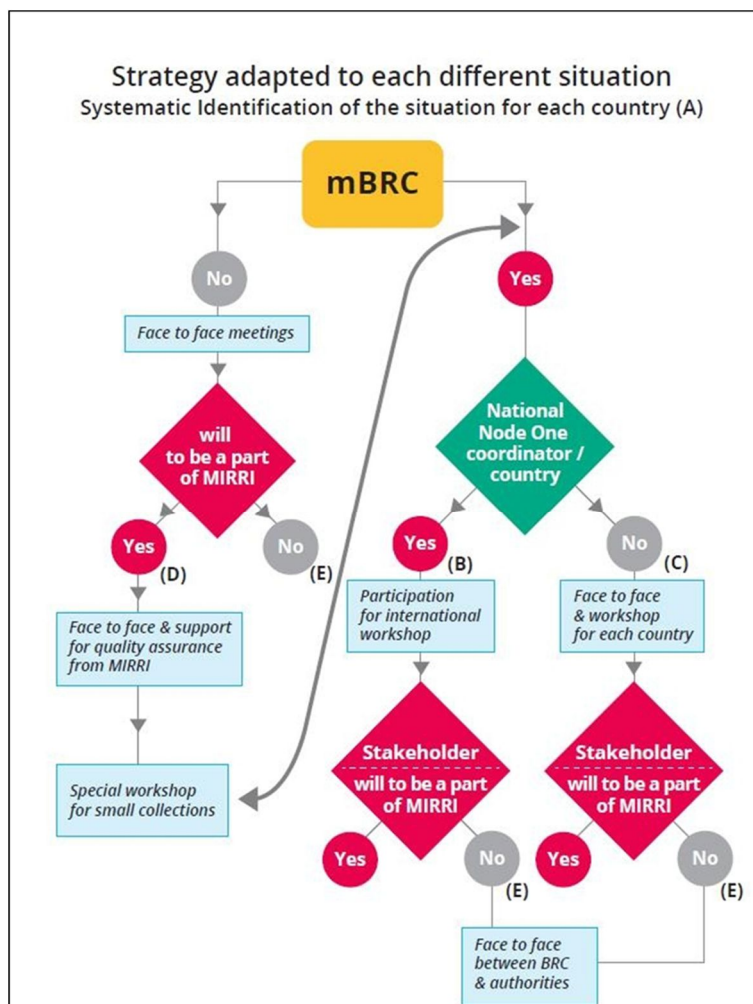


Table 3– List of the potential countries that can join MIRRI and the national delegates.

COUNTRY	PERSON	E-MAIL
Austria	Karolina Begusch-Pfefferkorn	Karolina.Begusch-Pfefferkorn@bmbwf.gv.at
	Daniel Weselka	daniel.weselka@bmbwf.gv.at
Bulgaria	Kostadin Grozev Kostadinov	kostadinov@mon.bg
	Ana Proykova	anap@phys.uni-sofia.bg
Czech Republic	Lukas Levak	Lukas.Levak@msmt.cz
Croatia	Slaven Michaljevic	Slaven.Mihaljevic@mzo.hr
	Tome Anticic	tome.anticic@irb.hr
Cyprus	Christos Aspris	caspris@dgepcd.gov.cy
	Eleana Gabriel	egabriel@dmrid.gov.cy
Estonia	Toivo Raim	toivo.raim@hm.ee
	Indrek Reimand	indrek.reimand@hm.ee
Finland	Petteri Kauppinen	petteri.kauppinen@minedu.fi
	Riitta Maijala	riitta.maijala@aka.fi
Germany	Eckart Lilienthal	Eckart.Lilienthal@bmbf.bund.de
	Peter Wenzel-Constabel	Peter.Wenzel-Constabel@bmbf.bund.de
Hungary	Peter Levai	levai.peter@wigner.mta.hu
	Gyorgyi Juhasz	gyorgyi.juhasz@nkfih.gov.hu
Ireland	Michael Ryan	michael.ryan@sfi.ie
Lithuania	Tomas Simulevic	Tomas.Simulevic@smm.lt
Luxemburg	Lynn Wenandy	lynn.wenandy@mesr.etat.lu
	Robert Kreger	robert.kerger@mesr.etat.lu
Malta	Ian Gauci Borda	ian.a.gauci-borda@gov.mt
Romania	Iulia Mihail	iulia.mihail@research.gov.ro
Slovak Republic	Barbora Liptakova	barbora.liptakova@minedu.sk
	Lubos Halada	lubos.halada@savba.sk
Slovenia	Albin Kralj	albin.kralj@gov.si
	Jana Kolar	kolar.jana@gmail.com
Sweden	Bjorn Hallerod	Bjorn.Hallerod@vr.se
	Mats Johnsson	mats.johnsson@gov.se
Associated countries		
Albania	Alban Ylli	albanylli@yahoo.co.uk
Armenia	Artur Movsisyan	a.movsisyan@scs.am
	Sargis Hayotsyan	s.hayotsyan@scs.am
Bosnia and Herzegovina	Ammar Mirascija	Ammar.Mirascija@mcp.gov.ba
	Suvad Dzafic	suvad.dzafic@mcp.gov.ba
Faroe Island	Annika Solvara	annika@gransking.fo
Georgia	Zviad Gabisonia	gabisonia@rustaveli.org.ge
Iceland	Marhret H. Ogmundsdottir	mho@hi.is
	Una Strand Vidar sdottir	una.strand.vidarsdottir@mrn.is

Implementation & Sustainability of Microbial Resource Research Infrastructure XXI Century

Israel	Mosche Deutsch	deutsch@mail.biu.ac.il
Liechtenstein	Frank Heeb	frank.heeb@avw.llv.li
Moldova	Ion Tiginyanu	tiginyanu@asm.md
Montenegro	Sasa Ivanovic	sasa.ivanovic@mna.gov.me
	Ramo Sendelij	ramo.sendelij@gmail.com
North Macedonia	Meri Cvetkovska	m.cvetkovska@ukim.edu.mk
Norway	Odd Ivar Eriksen	oie@forskningsradet.no
Serbia	Slobodan Prvanovic	prvanovic@ipb.ac.rs
Switzerland	Mirjam Van Daalen	mirjam.vandaalen@psi.ch
	Anna Fill	anna.fill@sbfi.admin.ch
Turkey	Aycan Yuksel	aycan.yuksel@sbb.gov.tr
	Murat Ozgoren	murat.ozgoren@gmail.com
Ukraine	Yulia Bezver shenko	yulia.bezvershenko@mon.gov.ua
	Iryna Prylutska	prylutska@mon.gov.ua

2.2. Risk and mitigation and Key Performance Indicators in the WP8 deliverables

Table 4 presents the risk and mitigation measures that are envisaged in this task and Table 5 mentions the KPI defined in the [IS_MIRRI21](#) Grant Agreement.

Table 4– Critical risks for implementation in WP8.

No	Description of Risk (likelihood)	Proposed risk-mitigation measures
1.	Enlargement with reduced success (medium)	Enlargement will be crucial for MIRRI's sustainability. For this reason, WP8 will implement a well-planned approach to increase the number of countries engaged in the RI with a financial contribution, and to enlarge the mBRCs and CCs partner base. In the case of country rejections, the underlying reasons for not wanting to join will be inquired and registered. This will allow the team to understand and analyze such motives and conceive a plan on the ways to adapt MIRRI's offer accommodating specific country needs (e.g. adapt services or other) and sharing experiences in other countries to better show the mutual advantages of becoming a MIRRI member. This will help bring on board in the long-term the initially not interested countries.

Table 5– Key Performance Indicators.

No	Indicator	Enlarge the number of European and associated countries participating in the infrastructure
1.	Target	Increase the number of MoU signatories by 4 countries by the end of the project



MIRRI IS21

IMPLEMENTATION AND
SUSTAINABILITY FOR
THE 21ST CENTURY

MICROBIAL RESOURCE RESEARCH INFRASTRUCTURE